



Government of India
Ministry of Earth Sciences
India Meteorological Department



Press Release

Date: 08th September, 2025

Time of Issue: 1315 hours IST

Subject: i) Under the influence of deep depression over southeast Pakistan and adjoining Rajasthan, Heavy to very heavy rainfall likely to continue over southwest Rajasthan and north Gujarat Region with possibility of Extremely heavy falls at isolated places over Saurashtra & Kutch on today, the 08th September, 2025 with reduction thereafter.
ii) Isolated heavy to very heavy rainfall likely over Sub-Himalayan West Bengal & Sikkim during 08th-10th September; Arunachal Pradesh, Assam & Meghalaya during 12th-14th and Nagaland & Manipur on 11th & 12th September, 2025.
iii) Fresh spell of heavy to very heavy rainfall likely over Odisha on 11th-12th September, 2025.

Realised weather during past 24 hours till 0830 hours IST of today, the 08th September, 2025:

- ❖ Heavy to very heavy rainfall with exceptionally heavy falls (≥ 30 cm) has been recorded at isolated places over Gujarat State; Heavy to very heavy rainfall with Extremely heavy rainfall (≥ 21 cm) at isolated places over East Rajasthan.
- ❖ Very heavy rainfall (12-20 cm) has been recorded at isolated places over West Rajasthan, Sub-Himalayan West Bengal & Sikkim and Odisha.
- ❖ Heavy rainfall (7-11 cm) has been recorded at isolated places over Punjab, Chhattisgarh, Assam, Nagaland, Bihar, Coastal Andhra Pradesh, Konkan, Madhya Maharashtra and Tamil Nadu.

For more details of realised weather, kindly refer [Annexure I](#).

i. Weather Systems, Forecast and Warnings (refer to Annexure II & III):

- ❖ The **Monsoon trough** at mean sea level runs south of its normal position.
- ❖ The **depression** over North Gujarat and adjoining Southwest Rajasthan moved nearly westwards and intensified into a **deep depression** over the same region at 1130 hrs IST of yesterday, the 07th September, 2025. It moved slowly west-northwestwards and lay centred over Southeast Pakistan and adjoining Rajasthan & Kutch at 0830 hrs IST of today, the 08th September, 2025, near latitude 25.0°N and longitude 70.5°E, about 90 km southeast of Chhor (Pakistan), 120 km southwest of Barmer (Rajasthan), 170 Km northwest of Radhanpur (Gujarat), 190 km west-northwest of Jaisalmer (Rajasthan), and 210 km north-northeast of Bhuj (Gujarat). It is very likely to move nearly northwestwards as a deep depression across southeast Pakistan and adjoining Rajasthan till 8th afternoon. Thereafter, it is likely to move nearly westwards and weaken gradually into a depression.
- ❖ An upper air **cyclonic circulation** lies over south Punjab and neighbourhood in lower tropospheric levels.
- ❖ A **trough** runs from cyclonic circulation associated with deep depression over the Southeast Pakistan and adjoining Rajasthan & Kutch to south Punjab in lower tropospheric levels.
- ❖ An upper air **cyclonic circulation** lies over northwest Bay of Bengal & adjoining west central Bay of Bengal off south Odisha & north Andhra Pradesh coasts in lower & middle tropospheric levels tilting southwards with height.

Under the influence of these systems, the following weather is likely:

West and Northwest India:

- ❖ Heavy to very heavy rainfall with extremely heavy falls ($\geq 21\text{cm}$) very likely at isolated places over Saurashtra & Kutch on 08th and isolated heavy to very heavy rainfall over north Gujarat on today, the 08th September with isolated heavy rainfall over Saurashtra & Kutch on 09th September, 2025.
- ❖ Light to moderate rain/thunderstorm at many places with isolated **Heavy to very heavy rainfall (12-20 cm) very likely over south Rajasthan on 08th September with isolated heavy rainfall over West Rajasthan on 09th September.**
- ❖ Light to moderate rain/thunderstorm at many/some places **with isolated heavy rainfall** is very likely over Uttarakhand on 08th, 12th & 13th; West Uttar Pradesh on 12th & 13th; East Uttar Pradesh on 11th & 12th September.

East & Central India:

- ❖ Light to moderate rain/thunderstorm at most/many places with isolated **heavy rainfall** likely over West Madhya Pradesh on 14th; East Madhya Pradesh on 10th, 11th & 13th; Vidarbha during 11th-13th; Chhattisgarh, Sub-Himalayan West Bengal & Sikkim during 08th-14th; Andaman & Nicobar Islands on 10th & 11th; Bihar during 08th-13th; Odisha during 10th-13th September and **heavy to very heavy falls over Sub-Himalayan West Bengal & Sikkim during 08th-10th and Odisha on 11th & 12th September.**

Northeast India:

- ❖ Light/moderate rain/thunderstorm at many/some places with isolated **heavy rainfall** likely over Nagaland, Manipur, Mizoram & Tripura on 08th, 09th & during 11th-14th; Arunachal Pradesh during 09th-14th; Assam & Meghalaya during 08th-14th September and **heavy to very heavy falls over Arunachal Pradesh, Assam & Meghalaya during 12th-14th and Nagaland & Manipur on 11th & 12th September.**

South Peninsular India

- ❖ Light to moderate rain/thunderstorm & gusty wind (speed 30-40 kmph) with isolated **heavy rainfall** likely over Tamil Nadu during 08th -10th; Kerala & Mahe on 09th & 10th; Coastal Andhra Pradesh & Yanam during 08th – 12th; Interior Karnataka on 10th; Rayalaseema on 11th & 12th and Telangana during 10th-14th September.
- ❖ Strong surface winds (speed reaching 30-40 kmph) very likely over Coastal Andhra Pradesh & Yanam and Rayalaseema during next 5 days.

Fishermen warning:

Fishermen are advised not to venture into the following from 08th to 13th September 2025 to the following Areas:

Arabian Sea

Along and off Gujarat coasts, northeast and adjoining some parts of eastcentral and northwest Arabian Sea on 08th September; north Gujarat coasts adjoining northeast Arabian Sea on 09th September and along and off Pakistan coasts and adjoining sea Areas during 08th to 11th; along and off the Somalia & Oman coasts; many parts of westcentral & some parts of southwest Arabian sea during 08th to 11th September and on 12th September, some parts of southwest adjoining westcentral Arabian sea on 11th September.

Bay of Bengal

Few parts of southwest adjoining southeast Bay of Bengal on 08th September, along and off Tamil Nadu coasts during 11th to 13th September; many parts of southwest & adjoining some parts of westcentral & southeast Bay of Bengal during 11th --September; many parts of southwest, some parts of central & adjoining few parts of southeast Bay of Bengal on 12th; Few parts of Comorin area during 08th to 10th September and over Gulf of Mannar & adjoining Comorin area on 11th to 13th September.

ii. Weather conditions and forecast over Delhi/NCR during 08th September to 11th September 2025 (Annexure IV)

For more details, kindly refer National Weather Bulletin:

https://mausam.imd.gov.in/responsive/all_india_forecast_bulletin.php

For District wise warnings refer: <https://mausam.imd.gov.in/responsive/districtWiseWarningGIS.php>

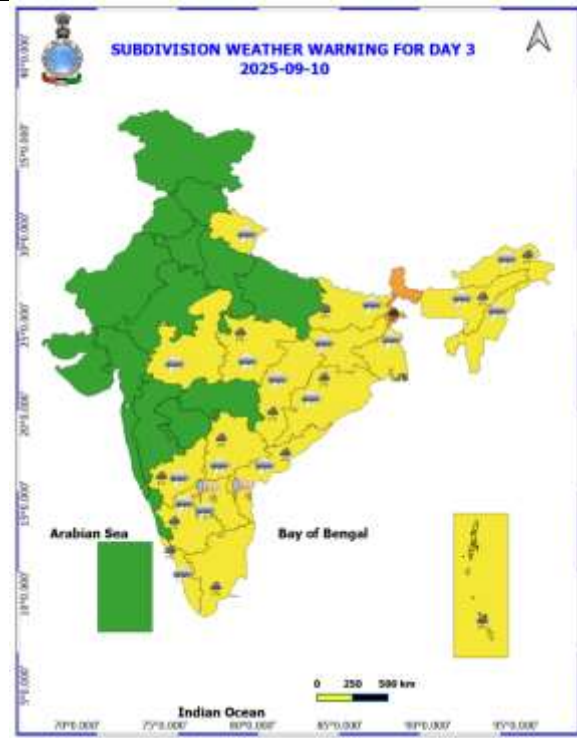
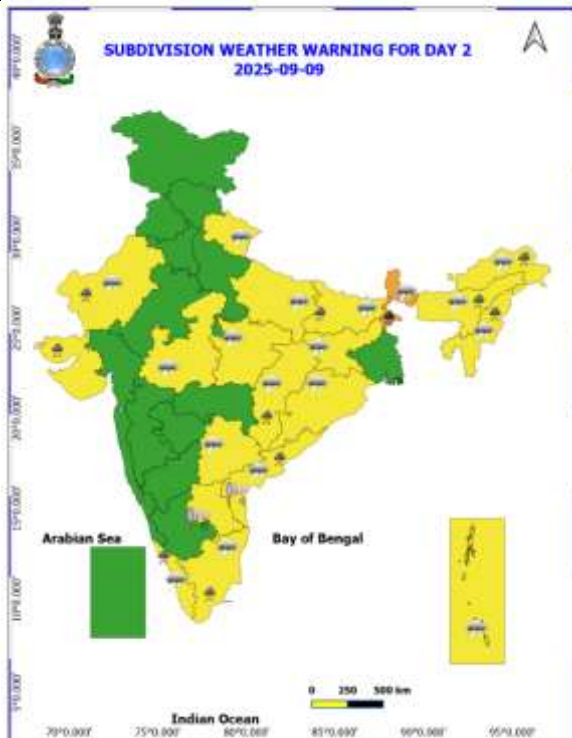
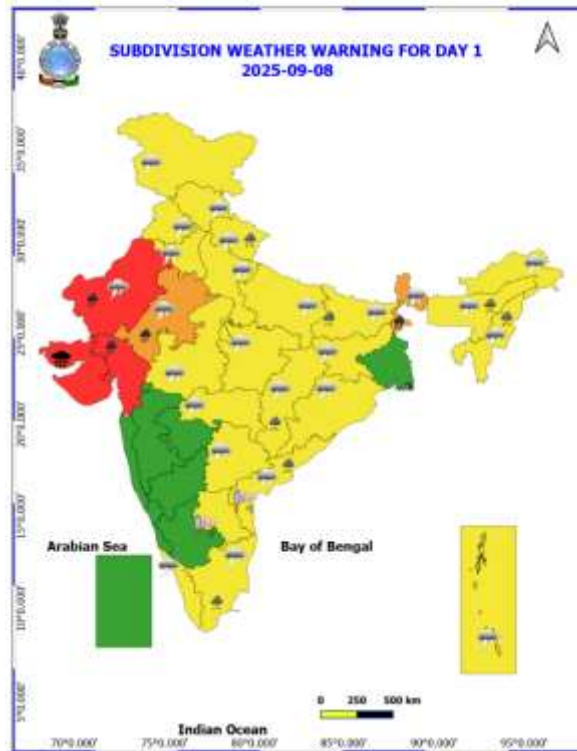
For Fishermen warning refer <https://rsmcnewdelhi.imd.gov.in/fishermen-warning.php>

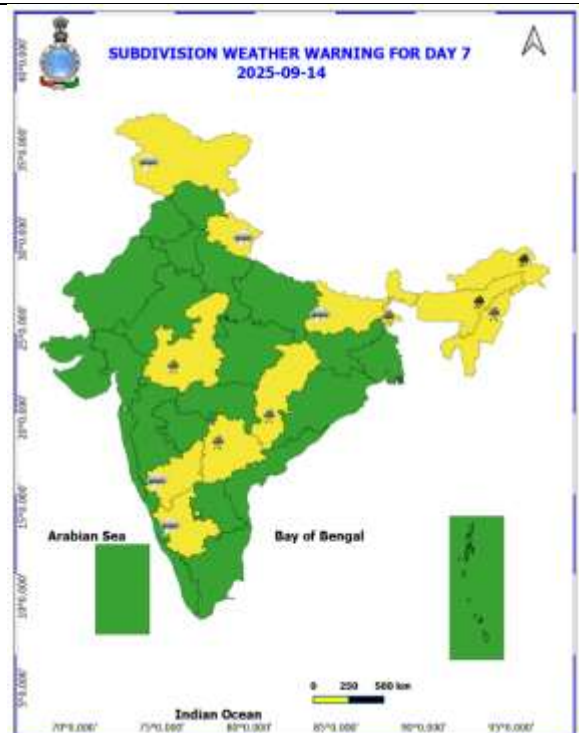
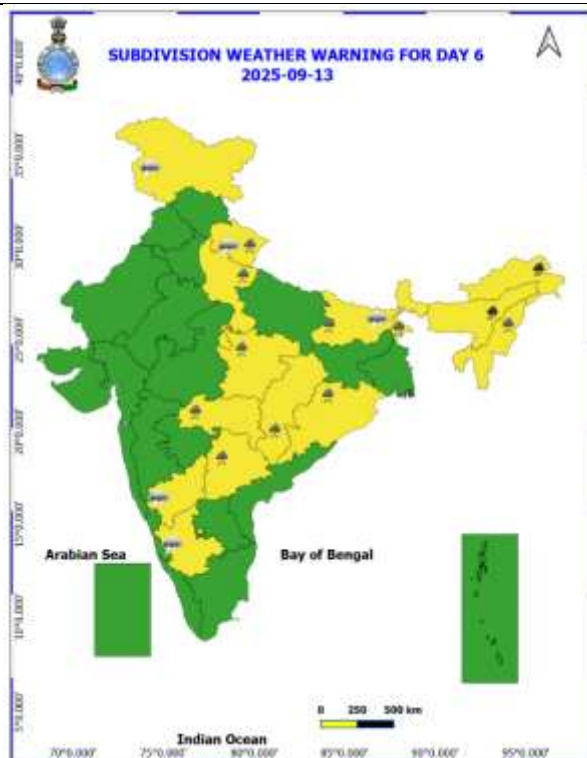
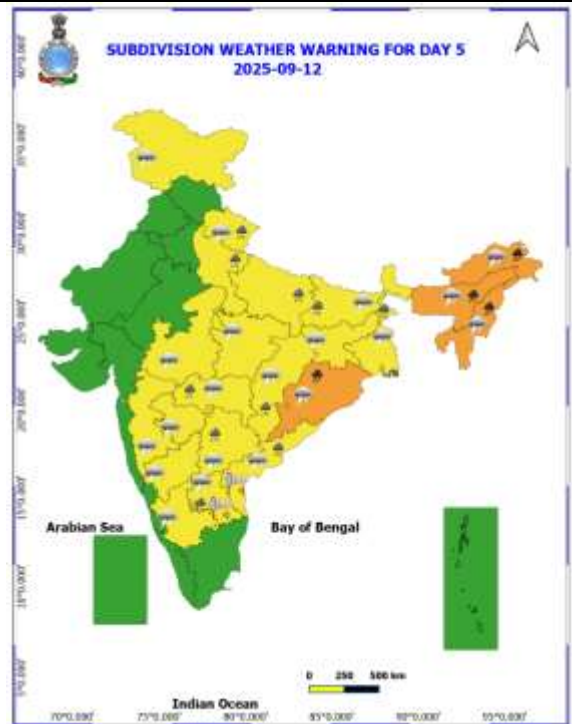
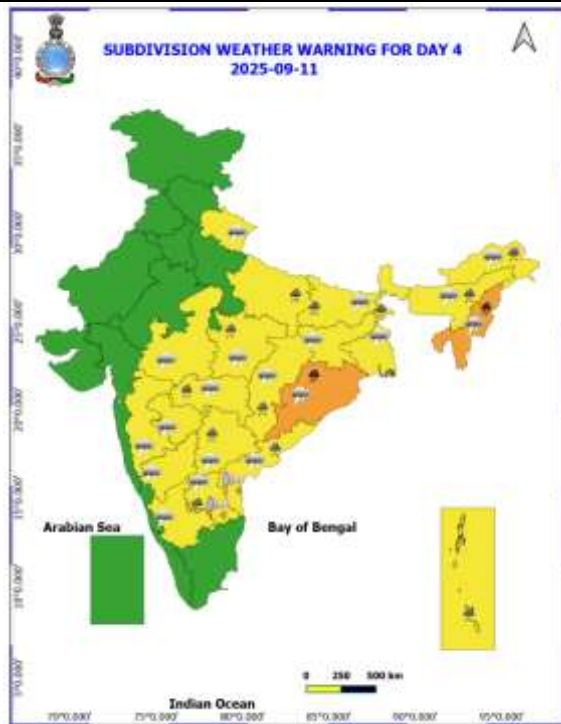
Rainfall recorded (in cm) during past 24 hours till 0830 hours IST of today, the 08th September:

- ❖ **Gujarat Region:** Suigam (dist Banaskantha) 40, Bhabhar (dist Banaskantha) 35, Wav (dist Banaskantha) 30, Tharad (dist Banaskantha) 29, Santalpur (dist Patan) 20, Radhanpur (dist Patan) 19, Deodar (dist Banaskantha) 14, Kaprada (dist Valsad) 11, Dahegam (dist Gandhinagar) 10, Valsad (dist Valsad) 9, Valod (dist Tapi) 9, Dharampur (dist Valsad) 8, Silvassa (dist Dadara & Nagar Haveli) 8, Khergam (dist Navsari) 8, Madhbun (dist Dadara & Nagar Haveli) 8, Idar (dist Sabarkantha) 8, Lakhani (dist Banaskantha) 7, Vyara (dist Tapi) 7, Talod (dist Sabarkantha) 7, Vyara_aws (dist Tapi) 7, Vapi (dist Valsad) 7;
- ❖ **Saurashtra & Kutch:** Rapar (dist Kutch) 36, Bachau_aws (dist Kutch) 14, Malia_miana (dist Morbi) 12, Kandla Airport (dist Kutch) 10, Gandhidham (dist Kutch) 10, Anjar (dist Kutch) 9, Bhuj (dist Kutch) 9, Lakhpur (dist Kutch) 8, Bhachau (dist Kutch) 8, Nakhatrana (dist Kutch) 8, Kandla New (dist Kutch) 8;
- ❖ **East Rajasthan:** Mounntabu Tehsil Sr (dist Sirohi) 25;
- ❖ **Sub-Himalayan West Bengal & Sikkim:** Alipurduar (pto) (dist Alipurduar) 14, Chepan (dist Alipurduar) 14, Damdim Tea Estate (dist Jalpaiguri) 9, Gajoldoba (dist Jalpaiguri) 9, Barobhisha (dist Alipurduar) 9, Kailashpur Tea Estate (dist Jalpaiguri) 9, Majherdabri Tea Garden (dist Alipurduar) 8, Bagdogra Iaf (dist Darjeeling) 8, Suryasen Mahavidyalaya (dist Darjeeling) 8, Aryaman Tea Estate (dist Alipurduar) 8, Namthang (dist Namchi) 7, Leesh River Tea Garden (dist Jalpaiguri) 7, Gopalpur Tea Estate (dist Alipurduar) 7, Tadong (dist Gangtok) 7, Chengmari/diana (dist Jalpaiguri) 7, Siliguri Pto (dist Darjeeling) 7, Baintgoorie T.e. (dist Jalpaiguri) 7, Dalgaon Tea Estate (dist Alipurduar) 7, Falakata (dist Alipurduar) 7, Gandrapara Tea Garden (dist Jalpaiguri) 7, Neora (dist Jalpaiguri) 7, Diana Tea Estate (dist Jalpaiguri) 7, Gangtok (dist Gangtok) 7;
- ❖ **West Rajasthan:** Sanchoore (dist Jalore) 12, Gudamalani Sr (dist Barmer) 10;
- ❖ **Odisha:** Laikera (dist Jharsuguda) 12, Jharbandh (dist Bargarh) 8;
- ❖ **Konkan & Goa:** Mangaon (dist Raigad) 10, Mandangad (dist Ratnagiri) 8, Karjat_agri (dist Raigad) 7;
- ❖ **Madhya Maharashtra:** Ozharkheda - Fmo (dist Nashik) 10;
- ❖ **Chhattisgarh:** Mainpur (dist Gariaband) 9, Ambikapur (dist Surguja) 7, Bhilai (dist Durg) 7;
- ❖ **Coastal Andhra Pradesh:** Mandasa (dist Srikakulam) 8;
- ❖ **Punjab:** Athwal Irr (dist Gurdaspur) 7;
- ❖ **Assam:** Chauldhowaghat (dist Lakhimpur) 8, Umrangso (dist Dima Hasao) 7;
- ❖ **Nagaland:** Mokokchang (dist Mokokchung) 7, Jharnapani (dist Dimapur) 7;
- ❖ **Bihar:** Hajipur (dist Vaishali) 7;
- ❖ **Tamil Nadu:** Kovilankulam (dist Virudhunagar), Aruppukottai KVK AWS (dist Virudhunagar), Nagudi (distPudukkottai), Manamelkudi (dist Pudukkottai), Arimalam (dist Pudukkottai), Keeranur (distPudukkottai) 7 each.

Table-1								
7 Days Rainfall Forecast								
S.No.	Subdivision	8- Sep	9- Sep	10- Sep	11- Sep	12- Sep	13- Sep	14- Sep
		Day 1	Day 2	Day 3	Day 4	Day 5	Day 6	Day 7
1	ANDAMAN & NICOBAR ISLANDS	WS	WS	WS	WS	WS	FWS	FWS
2	ARUNACHAL PRADESH	SCT	SCT	SCT	FWS	FWS	WS	WS
3	ASSAM & MEHGHALAYA	SCT	SCT	FWS	FWS	WS	WS	WS
4	NAGALAND, MANIPUR, MIZORAM AND TRIPURA	FWS	FWS	SCT	SCT	FWS	FWS	FWS
5	SUB HIMALAYAN WEST BENGAL & SIKKIM	WS	WS	WS	WS	WS	WS	WS
6	GANGETIC WEST BENGAL	ISOL	ISOL	SCT	FWS	FWS	FWS	SCT
7	ODISHA	SCT	SCT	FWS	FWS	WS	FWS	SCT
8	JHARKHAND	ISOL	SCT	FWS	FWS	FWS	FWS	FWS
9	BIHAR	SCT	FWS	FWS	FWS	FWS	FWS	SCT
10	EAST UTTAR PRADESH	SCT	SCT	ISOL	ISOL	ISOL	ISOL	ISOL
11	WEST UTTAR PRADESH	ISOL	ISOL	ISOL	ISOL	ISOL	ISOL	ISOL
12	UTTARAKHAND	FWS	SCT	SCT	SCT	FWS	FWS	FWS
13	HARYANA, CHANDIGARH & DELHI	SCT	ISOL	ISOL	ISOL	SCT	SCT	ISOL
14	PUNJAB	SCT	ISOL	ISOL	ISOL	SCT	SCT	ISOL
15	HIMACHAL PRADESH	SCT	SCT	SCT	SCT	SCT	SCT	SCT
16	JAMMU AND KASHMIR AND LADAKH	FWS	SCT	DRY	ISOL	SCT	SCT	SCT
17	WEST RAJASTHAN	SCT	ISOL	ISOL	ISOL	DRY	DRY	DRY
18	EAST RAJASTHAN	SCT	ISOL	ISOL	ISOL	ISOL	ISOL	ISOL
19	WEST MADHYA PRADESH	SCT	SCT	SCT	SCT	SCT	FWS	FWS
20	EAST MADHYA PRADESH	SCT	SCT	FWS	FWS	FWS	FWS	FWS
21	GUJRAT REGION	WS	FWS	FWS	SCT	SCT	SCT	SCT
22	SAURASHTRA & KUTCH	WS	FWS	FWS	SCT	SCT	SCT	SCT
23	KONKAN & GOA	FWS	SCT	SCT	SCT	SCT	SCT	SCT
24	MADHYA MAHARASHTRA	SCT	ISOL	ISOL	ISOL	ISOL	SCT	SCT
25	MARATHWADA	ISOL	ISOL	ISOL	SCT	SCT	SCT	SCT
26	VIDARBHA	FWS	FWS	FWS	WS	WS	WS	FWS
27	CHHATTISGARH	FWS	FWS	WS	WS	WS	WS	WS
28	COASTAL ANDHRA PRADESH	SCT	SCT	FWS	FWS	FWS	FWS	SCT
29	TELANGANA	ISOL	ISOL	SCT	SCT	SCT	SCT	SCT
30	RAYALASEEMA	ISOL	ISOL	SCT	FWS	FWS	FWS	SCT
31	TAMILNADU & PUDUCHERRY	SCT	SCT	FWS	ISOL	ISOL	ISOL	ISOL
32	COSTAL KARNATAKA	SCT	SCT	SCT	ISOL	ISOL	SCT	SCT
33	NORTH INTERIOR KARNATAKA	ISOL	ISOL	SCT	SCT	SCT	SCT	SCT
34	SOUTH INTERIOR KARNATAKA	SCT	SCT	SCT	SCT	SCT	SCT	SCT
35	KERALA AND MAHE	SCT	WS	FWS	SCT	SCT	SCT	SCT
36	LAKSHADWEEP	SCT	SCT	SCT	SCT	SCT	SCT	SCT

- As the lead period increases forecast accuracy decrease.





- Action may be taken based on ORANGE AND REDCOLOUR warnings.
- Vulnerable regions likely urban and hilly areas action may be initiated for heavy rainfall warning.
- As the lead period increases forecast accuracy decreases.

Detailed districtwise Multi Hazard weather warning for next five days available at
<https://mausam.imd.gov.in/responsive/districtWiseWarningGIS.php>

Weather forecast over Delhi/NCR during 08th to 11th September 2025**Past Weather:**

There has been no large change in maximum temperature and minimum temperatures in past 24 hours over Delhi. The minimum temperatures were in the range of 23-25°C and maximum temperatures were in the range of 33- 34°C. The minimum temperatures and maximum temperatures were near normal Delhi. Easterly winds prevailed with wind speed upto 18 kmph in past 24 hours over Delhi. Partly cloudy sky with a wind speed of upto 10-15 kmph from the northeast direction prevailed over the region in the forenoon today.

Weather Forecast:

08.09.2025: Partly cloudy sky. Possibility of one or two spells of very light to light rain/ thundershowers at a few places towards afternoon/evening. The maximum temperatures over Delhi are likely to be in the range of 34 to 36°C. The maximum temperature will be above normal upto 1 to 3°C. The predominant surface wind will likely be from the south direction with a wind speed of upto 10-15 kmph during afternoon and 10-15 kmph from the west direction during evening and night.

09.09.2025: Partly cloudy sky. Possibility of one or two spells of very light rain/thundershowers at isolated places. The maximum and minimum temperatures over Delhi are likely to be in the range of 34 to 36°C and 24 to 26 °C respectively. The minimum temperature will be near normal and the maximum temperature will be above normal upto 1 to 3°C. The predominant surface wind will likely to be from the northwest direction with a wind speed of upto 10-15 kmph during morning and afternoon hours. It will then decrease upto 05-10 kmph from the northwest direction during evening and night.

10.09.2025: Partly cloudy sky. The maximum and minimum temperatures over Delhi are likely to be in the range of 34 to 36°C and 24 to 26°C respectively. The minimum temperature will be near normal and the maximum temperature will be below above up to 1 to 3°C. The predominant surface wind will likely to be from the northwest direction with a wind speed of upto 20-25 kmph during morning. It will then decrease upto 15-20 kmph from the northwest during afternoon, evening and night.

11.09.2025: Partly cloudy sky. The maximum and minimum temperatures over Delhi are likely to be in the range of 33 to 35°C and 23 to 25°C respectively. The minimum temperature will be below normal up to 0 to 2°C and the maximum temperature will be above normal up to 0 to 2°C. The predominant surface wind will likely to be from the northwest direction with a wind speed upto 15-20 kmph during morning. The predominant surface wind will likely to be from the west direction with a wind speed of upto 10-15 kmph during afternoon. It will remain upto 10-15 kmph from the northwest direction during evening and night.

Impact & Action Suggested due to

- ❖ **Heavy to very heavy rainfall with extremely heavy falls ($\geq 21\text{cm}$)** at isolated places over Saurashtra & Kutch on 08th and isolated **heavy to very heavy rainfall** over north Gujarat on today, the 08th September.
- ❖ **Heavy to very heavy rainfall (12-20 cm)** at isolated places over south Rajasthan on 08th; Sub-Himalayan West Bengal & Sikkim during 08th-10th; Nagaland, Manipur, Odisha on 11th & 12th; Arunachal Pradesh, Assam & Meghalaya during 12th-14th September.

Impact Expected

- Localized Flooding of roads, water logging in low lying areas and closure of underpasses mainly in urban areas of the above region.
- Occasional reduction in visibility due to heavy rainfall.
- Disruption of traffic in major cities due to water logging in roads leading to increased travel time.
- Minor damage to kutcha roads.
- Possibilities of damage to vulnerable structure.
- Localized Landslides/Mudslides/landslips/mudslips/landsinks/mudsinks.
- Damage to horticulture and standing crops in some areas due to inundation.

- It may lead to riverine flooding in some river catchments (for riverine flooding please visit Web page of CWC)

Action Suggested

- Check for traffic congestion on your route before leaving for your destination.
- Follow any traffic advisories that are issued in this regard.
- Avoid going to areas that face the water logging problems often.
- Avoid staying in vulnerable structure.

Agromet advisories for likely impact of Heavy / Heavy to Very Heavy / Extremely Heavy Rainfall

- In Gujarat, drain out excess rain water from fields of castor, cotton, groundnut, pearl millet, sesame, maize and vegetables in North Gujarat Zone; *kharif* groundnut, cotton, soybean, black gram and sesame in North West Zone; groundnut, cotton and soybean in North Saurashtra Zone; groundnut, cotton, soybean, black gram, green gram, sesame and pigeon pea in South Saurashtra Zone; rice, sugarcane, okra, tuber crops and vegetables in South Gujarat Heavy Rainfall Zone and rice, cotton, pigeon pea and fruit orchards (banana and mango) in South Gujarat Zone.
- In Rajasthan, drain out excess water from fields of green gram, cluster bean, moth bean and castor in Arid Western Plain Zone and cotton, maize, soybean, groundnut and pulses in Sub Humid Southern Plain and Aravali Hill Zone.
- In Sub-Himalayan West Bengal, make provision to drain out excess water from *aman* paddy and vegetable fields (chilli, bitter gourd, pointed gourd, okra, brinjal etc.) in Terai Zone.

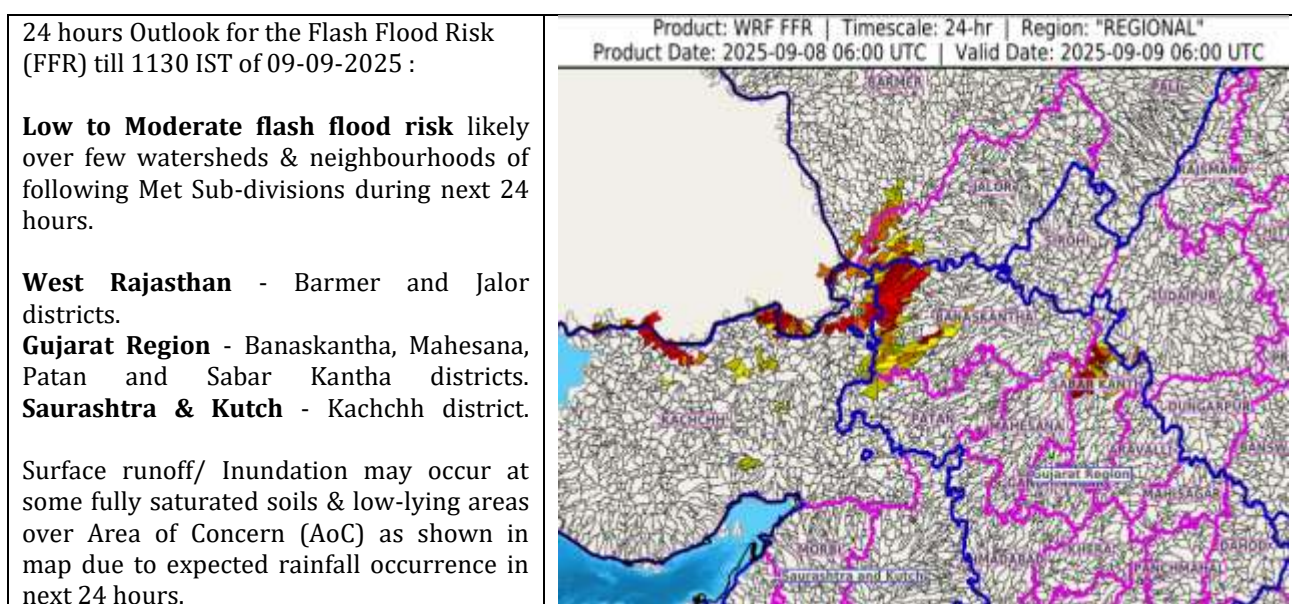
Livestock / Fishery

- Keep the animals inside the shed during heavy rainfall and provide them balanced feed.
- Store feed and fodder in a safe place to prevent spoilage.
- Construct an outlet with proper netting around the ponds to drain out excess water, thereby preventing fish from escaping in case of overflow.

Agromet advisories for likely impact of Thunderstorm / Gusty Winds / Squally Winds

- Provide mechanical support to horticultural crops and staking or support to vegetables and young fruit plants / fruit-bearing plants to avoid lodging due to strong winds.

Flash flood guidance:



Legends & abbreviations:

- ❖ **Heavy Rain:**64.5-115.5mm; **Very Heavy Rain:**115.6-204.4mm; **Extremely Heavy Rain:** >204.4mm.
- ❖ **Obsy:** Observatory; Automatic Weather Station; **ARG:** Automatic Rain Gauge; **dist:** District; **NH:** National Highway; **KVK:** Krishi Vigyan Kendra; **DVC:** Damodar Valley Corporation; **PTO:** Part Time Office, **Aero:** Aerodrome, **IAF:** Indian Air Force.
- ❖ **Region wise classification of meteorological Sub-Divisions:**
 - **Northwest India:** Western Himalayan Region (Jammu-Kashmir-Ladakh-Gilgit-Baltistan-Muzaffarabad, Himachal Pradesh and Uttarakhand); Punjab, Haryana-Chandigarh-Delhi; West Uttar Pradesh, East Uttar Pradesh, West Rajasthan and East Rajasthan.
 - **Central India:** West Madhya Pradesh, East Madhya Pradesh, Vidarbha and Chhattisgarh.
 - **East India:** Bihar, Jharkhand, Sub-Himalayan West Bengal & Sikkim; Gangetic West Bengal, Odisha and Andaman & Nicobar Islands.
 - **Northeast India:** Arunachal Pradesh, Assam & Meghalaya and Nagaland, Manipur, Mizoram & Tripura.
 - **West India:** Gujarat Region, Saurashtra & Kutch, Konkan & Goa, Madhya Maharashtra and Marathawada.
 - **South India:** Coastal Andhra Pradesh & Yanam, Telangana, Rayalaseema, Coastal Karnataka, North Interior Karnataka, South Interior Karnataka, Kerala & Mahe, Tamil Nadu, Puducherry & Karaikal and Lakshadweep.

LEGENDS

1. अंडमान और निकोबार द्वीपसमूह

2. अरुणाचल प्रदेश

3. असम और मेघालय

4. नागालैंड, मणिपुर, मिजोरम और त्रिपुरा

5. उप-हिमालयी पश्चिम बंगाल और सिक्किम

6. गंगीय पश्चिम बंगाल

7. ओडिशा

8. झारखंड

9. बिहार

10. पूर्वी उत्तर प्रदेश

11. पश्चिम उत्तर प्रदेश

12. उत्तराखंड

13. हरियाणा, चंडीगढ़ और दिल्ली

14. पंजाब

15. हिमाचल प्रदेश

16. जम्मू और कश्मीर और लद्दाख

17. पश्चिम राजस्थान

18. पूर्वी राजस्थान

19. पश्चिम मध्य प्रदेश

20. पूर्वी मध्य प्रदेश

21. गुजरात

22. सौराष्ट्र

23. कोंकण और गोवा

24. मध्य महाराष्ट्र

25. मराठवाड़ा

26. विदर्भ

27. छत्तीसगढ़

28. तटीय आंध्र प्रदेश और यनम

29. तेलंगाना

30. रायलसीमा

31. तमिलनाडु, पुडुचेरी और कराईकल

32. तटीय कर्नाटक

33. आंतरिक उत्तरी कर्नाटक

34. आंतरिक दक्षिणी कर्नाटक

35. केरल और माहे

36. लक्षद्वीप



1. Andaman & Nicobar Islands

2. Arunachal Pradesh

3. Assam & Meghalaya

4. Nagaland, Manipur, Mizoram & Tripura

5. Sub-Himalayan West Bengal & Sikkim

6. Gangetic West Bengal

7. Odisha

8. Jharkhand

9. Bihar

10. East Uttar Pradesh

11. West Uttar Pradesh

12. Uttarakhand

13. Haryana, Chandigarh & Delhi

14. Punjab

15. Himachal Pradesh

16. Jammu & Kashmir and Ladakh

17. West Rajasthan

18. East Rajasthan

19. West Madhya Pradesh

20. East Madhya Pradesh

21. Gujarat

22. Saurashtra

23. Konkan & Goa

24. Madhya Maharashtra

25. Marathwada

26. Vidarbha

27. Chhattisgarh

28. Coastal Andhra Pradesh & Yanam

29. Telangana

30. Rayalaseema

31. Tamilnadu, Puducherry & Karaikal

32. Coastal Karnataka

33. North Interior Karnataka

34. South Interior Karnataka

35. Kerala & Mahe

36. Lakshadweep

SPATIAL DISTRIBUTION (% of Stations reporting)

% Stations	Category	% Stations	Category
76-100	Widespread (WS/Most Places)	26-50	Scattered (SCT/A Few Places)
51-75	Fairly Widespread (FWS/Many Places)	1-25	Isolated (ISOL)



Fog



Heavy Snow



Cold Wave



Heavy Rain



Dust Storm



Cold Day



Very Heavy Rain



Heat Wave



Ground Frost



Extremely Heavy Rain



Warm Night



Thunder & Lightning



Hot Day



Hailstorm



Hot & Humid



Dust Raising Winds



Strong Surface Winds

COLOUR CODED WARNING

No Warning (No Action)

Watch (Be Aware)

Alert (Be Prepared To Take Action)

Warning (Take Action)

Probabilistic Forecast

Terms	Probability of Occurrence (%)
Unlikely	< 25
Likely	25 - 50
Very Likely	50 - 75
Most Likely	> 75

* Red colour warning does not mean "Red Alert", Red colour warning means "Take Action".

Forecast and Warning for any day is valid from 0830 hours IST of day till 0830 hours IST of next day.

For more details, kindly visit <https://mausam.imd.gov.in> or contact: 011-2434-4599

(Service to the Nation since 1875)

DEFINITION/CRITERIA

Rain/ Snow *

Heavy: 64.5 to 115.5 mm/cm *
Very Heavy: 115.6 to 204.4 mm/cm *
Extremely Heavy: > 204.4 mm/cm *

Heat Wave

When maximum temperature of a station reaches $\geq 40^{\circ}\text{C}$ for plains and $\geq 30^{\circ}\text{C}$ for hilly regions

(a) Based on Departure from normal

Heat Wave: Maximum Temperature Departure from normal 4.5°C to 6.4°C .

Severe Heat Wave: Maximum Temperature Departure from normal $\geq 6.5^{\circ}\text{C}$

(b). Based on Actual maximum temperature

Heat Wave: When actual maximum temperature $\geq 45^{\circ}\text{C}$.

Severe Heat Wave: When actual maximum temperature $\geq 47^{\circ}\text{C}$.

(c). Criteria for heat wave for coastal stations

When maximum temperature departure is $> 4.5^{\circ}\text{C}$ from normal. Heat Wave may be described provided maximum temperature $\geq 37^{\circ}\text{C}$.

Warm Night

When maximum temperature remains 40°C

Warm Night: When minimum temperature departure 4.5°C to 6.4°C .

Severe Warm Night: When minimum temperature departure $> 6.4^{\circ}\text{C}$.

Cold Wave

When minimum temperature of a station $\leq 10^{\circ}\text{C}$ for plains and $\leq 0^{\circ}\text{C}$ for hilly regions.

(a). Based on departure

Cold Wave: Minimum Temperature Departure from normal -4.5°C to -6.4°C .

Severe Cold Wave: Minimum Temperature Departure from normal $\leq -6.5^{\circ}\text{C}$

(b) Based on actual Minimum Temperature (for Plains only)

Cold Wave: When Minimum Temperature is $\leq 4.0^{\circ}\text{C}$

Severe Cold Wave: When Minimum Temperature is $\leq 2.0^{\circ}\text{C}$

(c) For Coastal Stations

When Minimum Temperature departure is $\leq -4.5^{\circ}\text{C}$ & actual Minimum Temperature is $\leq 15^{\circ}\text{C}$

Cold Day

When minimum temperature of a station $\leq 10^{\circ}\text{C}$ for plains and $\leq 0^{\circ}\text{C}$ for hilly regions

Based on departure

Cold Day: Maximum Temperature Departure from normal -4.5°C to -6.4°C .

Severe Cold Day: Maximum Temperature Departure from normal $\leq -6.5^{\circ}\text{C}$

Fog

Phenomenon of small droplets suspended in air and the horizontal visibility $< 1\text{km}$

Moderate Fog: When the visibility between 500-200 metres

Dense Fog: when the visibility between 50- 200 metres

Very Dense Fog: when the visibility < 50 metres

Thunderstorm

Sudden electrical discharges manifested by a flash of light (Lightning) and a sharp rumbling sound (thunder)

Dust/Sand Storm

An ensemble of particles of dust or sand energetically lifted to great heights by a strong and turbulent wind.

Frost

Ice deposits on ground

Air temperature $\leq 4^{\circ}\text{C}$ (over Plains)

Squall

A strong wind that rises suddenly, lasts for atleast 1 minute.

Moderate: Wind speed 52-61 kmph

Severe: Wind speed 62-67 kmph

Very Severe: Wind speed > 67 kmph

Sea State

Effect of various waves in the sea over specific area

Rough to very rough: Wind speed 41-62 kmph (22-33 knots) & Wave height 2.5-6 metre

High to very high: Wind speed 63-117 kmph (34-63 knots) & Wave height 6-14 metre

Phenomenal: Wind speed > 117 kmph (> 63 knots) & Wave height > 14 metre

Cyclone

Cyclonic Storm: Wind speed 62-87 kmph (34-47 knots)

Severe Cyclonic Storm: Wind speed 88-117 kmph (48-63 knots)

Very Severe Cyclonic Storm: Wind speed 118-165 kmph (64 - 89 knots)

Extremely Severe Cyclonic Storm: Wind speed 166-220 kmph (90 -119 knots)

Super Cyclone Storm: Wind speed > 220 kmph (> 119 knots)

* Red colour warning does not mean "Red Alert", Red colour warning means "Take Action".

Forecast and Warning for any day is valid from 0830 hours IST of day till 0830 hours IST of next day.

For more details, kindly visit <https://mausam.imd.gov.in> or contact: 011-2434-4599

(Service to the Nation since 1875)

Hot and Humid: When maximum temperatures remain 3°C above normal along with the above normal relative humidity.